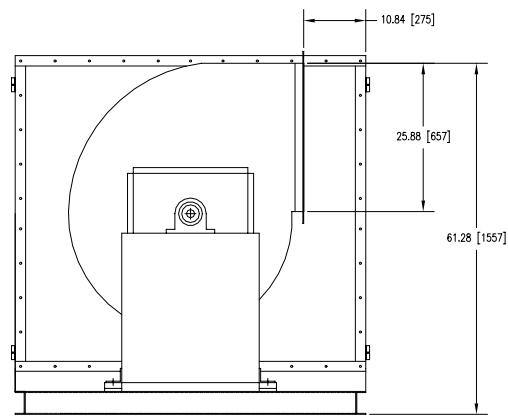


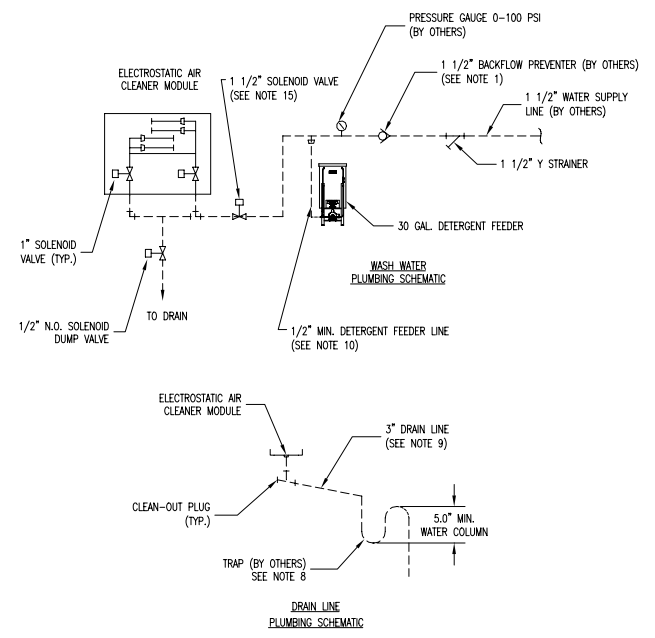
NOTES:

- 1) THE BACKFLOW PREVENTER MUST BE LOCATED UPSTREAM FROM THE DETERGENT FEEDER LINE CONNECTION AND "Y" STRAINER. THIS DEVICE SHOULD BE CONTINUOUS PRESSURE TYPE AND INSTALLED IN ACCORDANCE WITH ALL APPLICABLE PLUMBING CODE REQUIREMENTS.
- 2) WASH WATER REQUIREMENTS: 24.0 GPM @ 50 PSI
- 3) PIPING AND PRESSURE GAUGE SHOWN BY PHANTOM LINES IN SYSTEM PLUMBING SCHEMATIC SUPPLIED BY OTHERS.
- 4) AVERAGE WASH WATER CONSUMPTION: 84.0 GALLONS
AVERAGE DETERGENT USAGE: 1.4 GALLONS
- 5) SYSTEM WEIGHT (ESTIMATE) WITH POWER PACKS AND CONTROLS: 3,800 LBS.
- 6) UNIT SHOWN WITH RIGHT HAND ACCESS.
- 7) MINIMUM 40" ACCESS DOOR CLEARANCE.
- 8) DRAIN LINE TRAP MUST PROVIDE SUFFICIENT WATER COLUMN TO OVERCOME THE INTERNAL STATIC PRESSURE OF THE AIR HANDLING SYSTEM IN WHICH THE AIR CLEANER IS INSTALLED.
- 9) ALLOW FOR MAXIMUM AVAILABLE SLOPE ON DRAIN LINES. INSUFFICIENT SLOPE ON DRAIN LINES WILL RESULT IN POOR DRAINAGE, POOLING OF LIQUID IN THE CABINETS, AND SYSTEM FAILURE.
- 10) INJECT DETERGENT LINE INTO MAIN WATER LINE AS CLOSE AS POSSIBLE AND UPSTREAM FROM THE ESP MODULE.
- 11) PROTECT ALL WASH WATER AND PLUMBING COMPONENTS THAT ARE SUBJECT TO FREEZING.
- 12) IT IS RECOMMENDED THAT HOT WATER (MIN. 120°F) BE USED FOR A MORE EFFICIENT WASH CYCLE. HOT WATER TANKS SHOULD BE LOCATED AS CLOSE AS POSSIBLE TO THE UNIT BEING WASHED AND SUFFICIENT PIPING MUST BE PROVIDED SO THE WATER FLOW IS NOT RESTRICTED NOR WATER PRESSURE APPRECIABLY REDUCED.
- 13) FAN RATING: 8,500 CFM @ 5.0" TOTAL STATIC PRESSURE.
- 14) THIS SYSTEM REQUIRES TWO ELECTRICAL CIRCUITS: CONTROL - 120VAC/60HZ/1PH @ 30 AMP. MAX.
BLOWER MOTOR - 460VAC/60HZ/3PH RATED @ 21.0 FLA
- 15) SOLENOID ON VALVE MUST BE MOUNTED VERTICAL AND UPRIGHT.

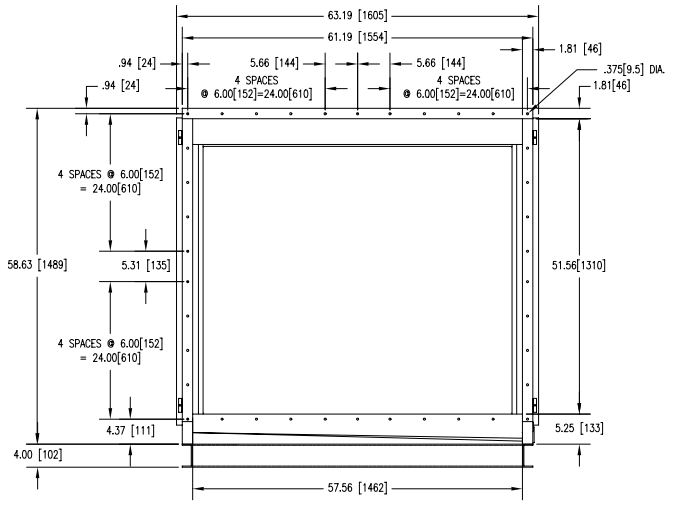
• ETL LISTING TO UL 867 "ELECTROSTATIC AIR CLEANERS"
 • UL LISTED YXYS & YXYS7 (CANADA) "HOOD AND DUCT ACCESSORIES"
 • FANS FOR KITCHEN EXHAUST SYSTEMS UL LISTED UL782 "POWER ROOF VENTILATORS FOR RESTAURANT EXHAUST APPLIANCES"
 • DESIGNED IN ACCORDANCE WITH THE RECOMMENDED PRACTICES OF NFPA 96 STANDARD FOR VENTILATION CONTROL AND FIRE PROTECTION OF COMMERCIAL COOKING OPERATIONS.



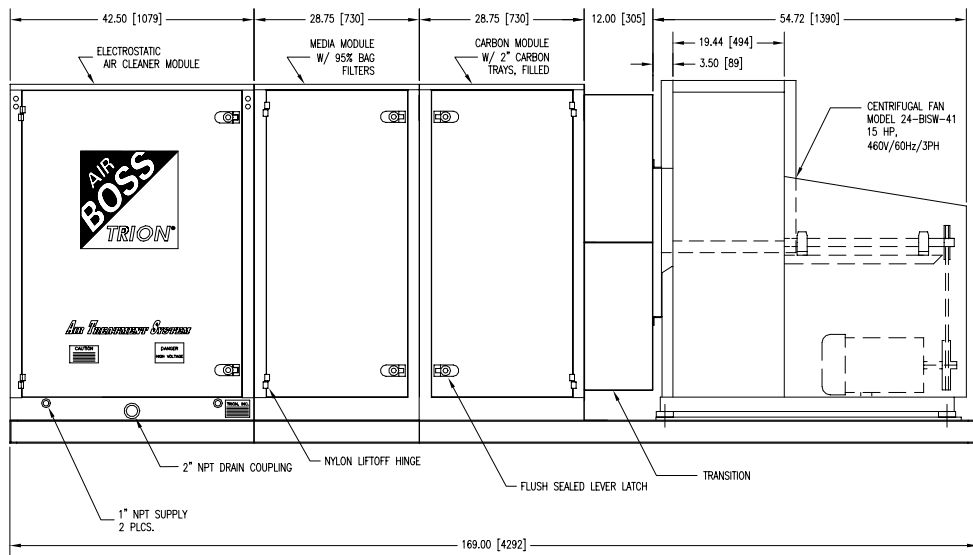
VIEW FROM FAN DISCHARGE



DRAIN LINE PLUMBING SCHEMATIC



VIEW FROM AIR ENTERING SIDE



C	AMO 7-27-06	PCN 17466	CORRECTED PICTORIAL
B	DAR 7-21-06	PCN 17459	ADD 1 1/2\"/>
A	AMO 6-15-06	PCN 17400	FAN WAS 22-BISW-41, TSP WAS 7.0\", ADD DUMP VALVE, & DET. FEEDER WAS 55 GAL
			CO-PCN-17068

UNLESS OTHERWISE SPECIFIED USE		SCALE		ANGLES		ATS 10 SYSTEM OUTLINE		CUSTOMER: WATERVIEW CONDOS		REV
3	PLACES	3	PLACES	± .015	± 1/2"	C		458535		C
DR.	DAR	CHKD.	DAR	APP.	CAR	TRION®		D		SHT
NEXT ASSY USED ON APPLICATION		DATE 11-16-05		DATE 11-16-05		DATE 11-16-05		W		1/1